



**PARTY
PLANNING
AND
FUNDRAISING
PACK**



WELCOME



THANK YOU FOR REGISTERING TO ORGANISE A 'NOT YOUR CHRISTMAS PARTY' FOR THE TRUSSELL TRUST.

You've done your bit by registering – now you need to invite friends, family or colleagues and donate the money you would normally spend on a party to help families unable to afford the essentials.

This pack has everything you need to host your get-together, raise money and help us fight hunger in our community.

THANK YOU!

With our very best wishes for the season,

Kate Merrifield
Events Engagement Manager

PLANNING CHECKLIST

- Register for Not Your Christmas Party and your **donation page** will be created automatically
- Decide a **date** for your party
- Invite everyone!** When you do, make sure to share the link to your fundraising page and ask people to donate to confirm they can make it!
- If you're doing your party with colleagues – don't forget about **matched giving!** Some companies will top up the donations you get – we've included the form in this pack
- Plan your party!** There are plenty of ideas and games in this pack for you to choose from
- Tell your guests to have their refreshments at the ready, use the Zoom backgrounds we've included here, and **get ready to have a good time!**
- Party like it's 2021!**
- Share on social media!** Take a screenshot of your party in gallery view and share it with us on social media – don't forget to use **#TeamTrussell**

GUEST TRACKER

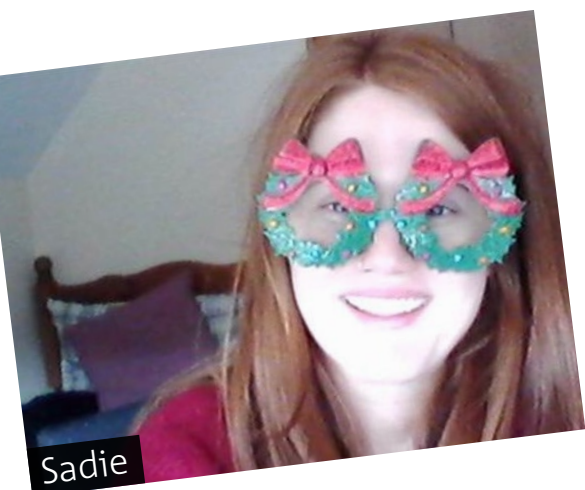
Print this guest tracker and use it to keep track of who is attending... and who has donated!

NAME	ATTENDING?	DONATED?

PARTY IDEAS

Here are some tips to ensure your party is a roaring success

- **Get dressed up!**
Christmas hats at the ready, festive jumpers, glam it up, the choice is yours.
- **Deck your desk!**
Have a competition to create the most festive work from home station! Share your photos on social media with the **#TeamTrussell**.
- **Use the Zoom backgrounds**
Save the backgrounds in this pack and share them with your guests.
- **Plan some games**
There are plenty of ideas in this pack, to make sure that your guests have a fantastic evening.



PARTY GAMES

WHAT'S INCLUDED AND HOW TO PLAY

We've included plenty of game ideas in this pack, but the only limit is your imagination! In this pack you'll find instructions for:

VIRTUAL CHARADES PG10

VIRTUAL Pictionary PG11

CHRISTMAS SCAVENGER HUNT PG12

CHRISTMAS BINGO PG13

A CHRISTMAS QUIZ PG14

PARTY INVITE

How to use your party invite:

- Download this image from the downloads page.
- Right click or long hold on a phone and copy the image.
- Paste it in an email or WhatsApp group.
- Don't forget to include the date, time and a link to your fundraising page.
- Hit send!



THE FUTURE LOOKS DEEPLY UNCERTAIN FOR MANY THOUSANDS OF PEOPLE THIS WINTER. BUT TOGETHER WE CAN CHANGE IT.

Join my Not Your Christmas Party, and help support families who are unable to afford the essentials. Give the money you would have spent to help support others.

NOT YOUR CHRISTMAS PARTY
THE VIRTUAL GET TOGETHER

WHY DONATIONS MATTER!

More than ever this Christmas we need to help those that need us the most. Nobody should have to make impossible decisions between staying warm, putting food on the table or paying the rent. **Help us change this.**

£10 could give a parent peace of mind that their family will not go hungry tonight.

£25 can help families in urgent need now.

£50 Could help provide more financial advice to worried families – helping them get back on their feet.

WHO WILL THIS HELP?

HOSTING YOUR
VIRTUAL CHRISTMAS
GET-TOGETHER WILL
SUPPORT PEOPLE
LIKE DONNA.



Two mini-strokes left Donna unable to work and provide for her family.

Donna was always good at managing her money. She worked as a care support worker and saved so she could support her children. Then she had two mini-strokes and her world was turned upside down. Without sick pay and no longer able to work, she had to use up her savings. And when there was nothing left, she faced the bleak possibility of her family going hungry.

With no other options available, Donna was referred to a food bank. On her first visit she received essential food supplies and was signposted to other valuable services within the area who could provide advice about benefits and other specialised advice she needed.

That moment proved to be a turning point, and when her circumstances changed, she decided to become a volunteer. A food bank helped Donna when she needed it most, and now she's there to provide a lifeline for other people who need one too.

“I didn't think I would ever had to use a food bank. I had a steady job, the money was good, everything was bright and then all of a sudden, just from sickness, it turned the wrong way for us.”

MATCHED GIVING FORM

Not sure what matched giving is? Turn over to see how you can use this form.

SUPPORTER DETAILS

Supporter name

Supporter email address

Supporter donation total

£

EMPLOYER DETAILS

Employer name

Employer contact & email address

Employer number

Donation amount

£

Is this payment going to be made as part of a larger payment? If so, please state the total amount of the payment to be made

£

Payment method (please select)

CAF

Charities Trust

Other Platform

Please state the name of the platform:

BACS or CAF online transfer:

The Trussell Trust | Sort Code: 16-00-21 | Account no: 41129077

Please let us know when you make the donation, the amount and under what name and reference. This way we can identify your donation from the bank statement.

Please use your first name and surname as your reference when making the payment and return this form to fundraising@trusselltrust.org

CHEQUE or CAF vouchers:

Send your gift via cheque or CAF cheque to the address below.

Please make cheques payable to the Trussell Trust.

The Trussell Trust, Unit 9 Ashfield Trading Estate, Ashfield Road, Salisbury, Wiltshire, SP2 7HL

Make your gift worth an extra 25% by Gift Aiding your donation. Download and return a completed [Gift Aid form](#) to us with your cheque. For more information on Gift Aid and tax effective giving visit www.trusselltrust.org/get-involved/ways-to-give/donations-faq/

THANK YOU!



The Trussell Trust is Reg. Charity in England & Wales (1110522) and Scotland (SC044246). Reg. Ltd. Co. in England & Wales (5434524).

Please note: Funds will only be able to be matched to an individual's total on completion of this form. Should you have any queries, please do not hesitate to contact Trussell Trust 01722 580178

HOW TO USE YOUR MATCHED GIVING FORM

IN THE UK, MORE PEOPLE THAN EVER ARE HAVING TO CUT BACK ON THE ESSENTIALS, UNABLE TO AFFORD THE BASIC THINGS WE ALL NEED IN LIFE.

And families with children are often at the forefront of this crisis. Although under 16s make up just 20% of the UK population, nearly 40% of the people supported by food banks in our network are children from this age group.

That's why we know it's not enough just to provide food.

We want to see a future free from hunger and the need for food banks.

VISIT [TRUSSELLTRUST.ORG](https://www.trusselltrust.org) FOR MORE INFORMATION.



If you're hosting a virtual get together

- If your workplace offers a matched giving scheme, you can use this form to request a matched donation.
- Please complete your details in the 'supporter details' section of the form and, once completed, pass onto your employer to complete the 'employer details' section.

Note for employer

Thank you for supporting The Trussell Trust by matching donations this Christmas – we're very grateful for your support. It is important that you complete this form to enable us to track your donation to your employee's fundraising total.

Please complete the 'employer details' section of the matched giving form.

Please mark an 'x' on the form to show how you would like to make your donation. Once you have made your donation, please return the completed form to us in one of the following ways:

- If donating via BACS or another online donation platform: please scan your completed form and email a copy to us at fundraising@trusselltrust.org
- If donating via cheque: please post the cheque and completed form to:
The Trussell Trust
Supporter Care Team
Unit 9, Ashfield Trading Estate
Ashfield Road
Salisbury SP2 7HL



VIRTUAL CHARADES



You can't beat a game of Christmas Charades and it's easy to play at your virtual get together! **How to play:**

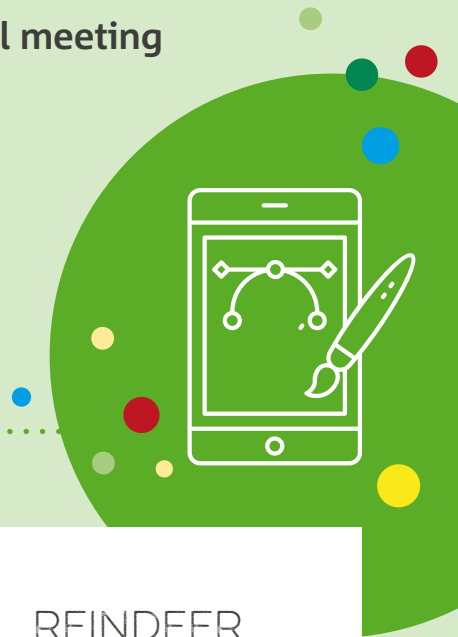
- 1) Print these prompts, cut them out and put in a bowl.
- 2) Pick one out at a time and private message each of your attendees in turn to tell them what to act!
- 3) The winner of each round is the person who guesses first.
- 4) We recommend using 'speaker view' to make this game more fun.
- 5) If you don't have a printer, there are also many websites you can try that randomly generate ideas. Try searching 'Christmas Charades Ideas'.

THE LITTLE DRUMMER BOY	MISTLETOE AND WINE	WRAPPING PRESENTS
COMING DOWN THE CHIMNEY	HANGING STOCKINGS	CAROLING
SCROOGE	MAKING A SNOW ANGEL	DECORATING THE TREE
SNOWBALL FIGHT	12 DAYS OF CHRISTMAS	THE NATIVITY
WALKING IN A WINTER WONDERLAND	ROCKING AROUND THE CHRISTMAS TREE	SLEIGH RIDE
CHRISTMAS DINNER	'T WAS THE NIGHT BEFORE CHRISTMAS	THE NUTCRACKER

VIRTUAL Pictionary

Virtual gatherings were made for Pictionary... as most virtual meeting software has an inbuilt whiteboard! **How to play:**

- 1) Make sure that you've enabled access for all of your guests.
- 2) Privately message each guest in turn a prompt.
- 3) They use the whiteboard to draw and get everyone to guess their efforts!
- 4) If you'd prefer to be able to join in too, everyone can use a word generator, just search 'Christmas Pictionary Generator'.



ELF ON A SHELF	SANTA BABY	REINDEER
SCROOGE	NORTH POLE	NAUGHTY OR NICE
JINGLE BELL ROCK	3 WISE MEN	WHITE CHRISTMAS
MRS CLAUS	WREATH	FOUR CALLING BIRDS
HO! HO! HO!	MISTLETOE	CAROLING
ELVES	SNOW ANGEL	GINGERBREAD HOUSE

SCAVENGER HUNT

Challenge your players to a fast paced scavenger hunt for guaranteed giggles!

How to play:

- 1) All players must be touching their computer before each round begins.
 - 2) The host calls out the first item on the list and starts the countdown.
 - 3) The players must rush to find the item in their house and bring it to the webcam before the timer runs out.
-

LIST:



CANDLE



STAR



STOCKING



BELLS



**LETTER
TO SANTA**



**CHRISTMAS
DECORATION**

CHRISTMAS BINGO

Christmas Bingo is great fun to play virtually. We've included bingo cards here - you can download these and send a set to each of your guests, or you can use an online bingo generator - just search 'Free Virtual Bingo'.

We've also included the call list which has been randomly generated - just call out the words in the order we've given you. The winner is the first person to cross off all the words on one of their cards and shout bingo!

CALL 1: **SNOWMAN**

CALL 2: **TREE**

CALL 3: **SANTA**

CALL 4: **YULE**

CALL 5: **WRAPPING**

CALL 6: **STOCKING**

CALL 7: **CAROL**

CALL 8: **STAR**

CALL 9: **REINDEER**

CALL 10: **MISTLETOE**

CALL 11: **ANGEL**

CALL 12: **DECORATIONS**

CALL 13: **HOLLY**

CALL 14: **GINGERBREAD**

CALL 15: **CANDLES**

CALL 16: **PUDDING**

CALL 17: **PRESENT**



CHRISTMAS QUIZ

Test your Christmas knowledge with our fun Christmas Quiz. We've included two question rounds and two picture rounds.

For the question rounds

- 1) Ask the questions on your virtual call and get everyone to write down the answers at home.
- 2) Shout out the answers at the end of each round and award a point for each correct answer!

For the picture rounds:

- 1) Use screen sharing function to show your guests the rounds and get them to write down their answers.
- 2) Give a point for each correct answer!

The person with the most points overall wins!



CHRISTMAS QUIZ

QUESTION ROUNDS AND ANSWERS

Question round 1

- 1) The Christmas tree in Trafalgar Square, London is an annual gift from which nation?

Answer: Norway

- 2) According to the Christmas carol, 'Good King Wencelas looked out on the Feast of Stephen'. On what date does the Feast of Stephen fall?

Answer: 26th December

- 3) From which country did Saint Nicholas originate?

Answer: Turkey

- 4) If a person was given all the gifts in the song 'The Twelve days of Christmas', how many gifts in total would they receive?

Answer: 364

- 5) What Christmas item was invented by London baker Tom Smith in 1847?

Answer: Christmas crackers

- 6) In which ocean does the Australian territory of Christmas Island lie?

Answer: Indian Ocean

- 7) If you were born on Christmas Day under what zodiac sign would you be?

Answer: Capricorn

- 8) From which country were turkeys introduced into the UK in the 16th Century?

Answer: America

- 9) What name is given to the four week period leading up to Christmas?

Answer: Advent

- 10) Can you name all of Santa's reindeer?

Answer: Dasher, Dancer, Prancer, Vixen, Comet, Cupid, Doner, Blitzen, Rudolph

Question round 2

- 1) Who wrote the short novel 'A Christmas Carol'?

Answer: Charles Dickens

- 2) What is wrapped in bacon in a British 'Pig in blanket'?

Answer: Sausage

- 3) In the song 'Santa Claus is Coming to Town', how many times is he checking his list?

Answer: Twice

- 4) In the Christmas carol, how many ships came 'sailing in'?

Answer: Three

- 5) What three gifts did the Kings bring to the baby Jesus?

Answer: Gold, Frankincense and Myrrh

- 6) Which Christmas carol contains the following 'The cattle are lowing, the baby awakes'?

Answer: Away in a Manger

- 7) In which pantomime does Buttons appear?

Answer: Cinderella

- 8) In the song 'Rudolph the Red Nose Reindeer' what was the weather like on Christmas Eve?

Answer: Foggy

- 9) What colour is the Grinch in 'How the Grinch Stole Christmas'?

Answer: Green

- 10) What is the eleventh word of the chorus of 'Jingle Bells'?

Answer: Fun

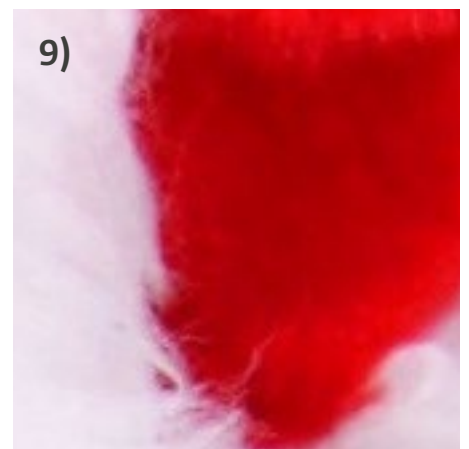
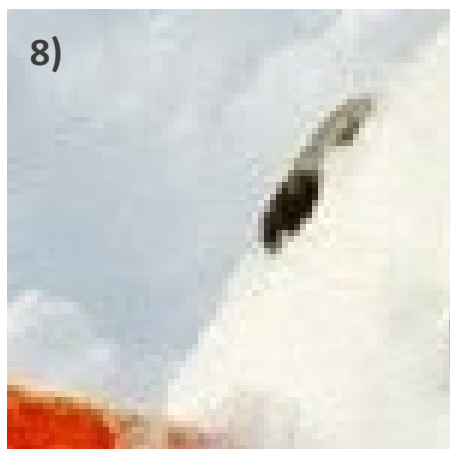
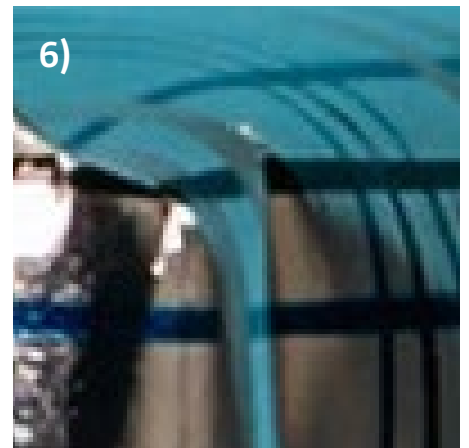
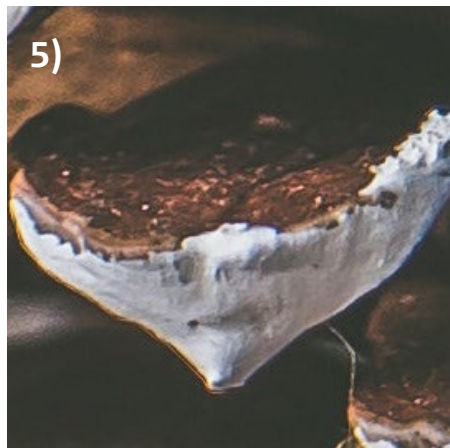
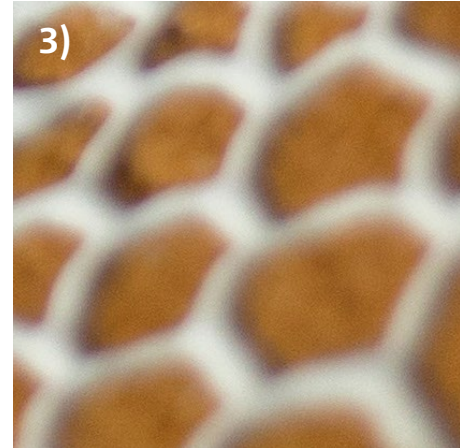
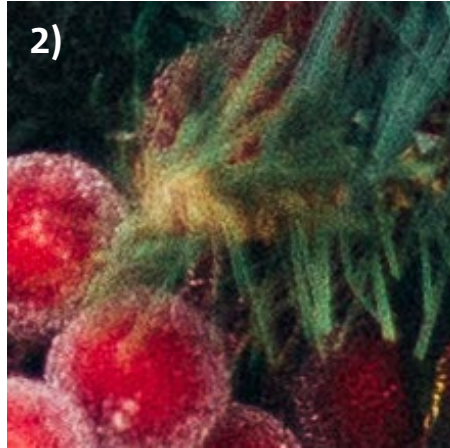
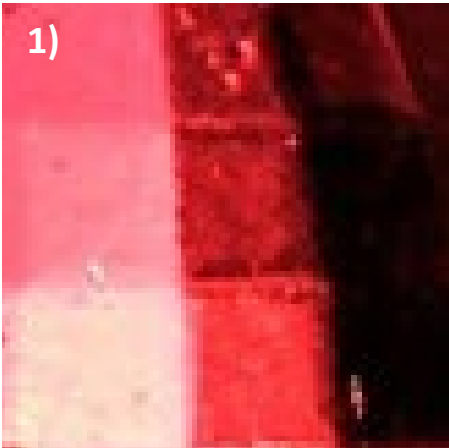
CHRISTMAS QUIZ

PICTURE ROUND 1 – DINGBATS

<p>1)</p> <p>Nigmassht</p>	<p>2)</p> <p>STUN</p>	<p>3)</p> 
<p>4)</p> <p>Spear Cottage Pepper Shepherd Garden Apple</p>	<p>5)</p> <p>TURKEY</p> <p>SSSSSSSS</p>	<p>6)</p> <p>Tofrankuch</p>
<p>7)</p> <p>CCCCCC FESTIVE</p>	<p>8)</p> 	<p>9)</p> <p>PPPPP Our planet</p>
<p>10)</p> <p>Hello Spring! Hi Summer! Howdey Autumnn! Yo! Winter</p>	<p>11)</p> <p>Night Night Night Night Night Night Night Night Night Night Night Night</p>	<p>12)</p> <p>MISTLETOE</p> <p>XXX</p>
<p>13)</p> <p>Pres ents</p>	<p>14)</p> <p>A3 tortilla A4</p>	<p>15)</p> <p>stel</p>
<p>16)</p> <p>MONDAY TUESDAY WEDNESDAY THURSDAY FRIDAY</p>	<p>17)</p> <p>ABCDEFGHIJKMNOPQRSTUVWXYZ. ABCDEFGHIJKMNOPQRSTUVWXYZ.</p>	<p>18)</p> <p>FIR</p> <p>Here Here Here Here</p>

CHRISTMAS QUIZ

PICTURE ROUND 2 - GUESS THE OBJECT



CHRISTMAS QUIZ

PICTURE ROUND ANSWERS

Picture round 1 - Dingbats

- 1) **Answer:** Midnight Mass
- 2) **Answer:** Mixed Nuts
- 3) **Answer:** Snowball
- 4) **Answer:** Mincepies [mints pies]
- 5) **Answer:** Turkey Leftovers
- 6) **Answer:** Frankinsense
- 7) **Answer:** Festive Season [Cs on]
- 8) **Answer:** White Christmas
- 9) **Answer:** Peace on Earth
- 10) **Answer:** Season's Greetings
- 11) **Answer:** Twelfth Night
- 12) **Answer:** Kisses under the mistletoe
- 13) **Answer:** Opening presents
- 14) **Answer:** Wrapping paper
- 15) **Answer:** Tinsel [t in sel]
- 16) **Answer:** Holy Days
- 17) **Answer:** Noel Noel
- 18) **Answer:** Presents under the tree

Picture round 2 - Guess the object

- 1) **Answer:** Christmas bauble
- 2) **Answer:** Christmas wreath
- 3) **Answer:** Ginger bread
- 4) **Answer:** Christmas tree branch
- 5) **Answer:** Pine cone
- 6) **Answer:** Christmas present
- 7) **Answer:** Frost
- 8) **Answer:** Snowman
- 9) **Answer:** Santa hat

ZOOM BACKGROUNDS

Zoom backgrounds to take your party game to the next level!

Use our custom branded background or get even more in the spirit by hiding in a christmas tree or sitting fire side!



Follow these steps to try out the backgrounds on your Zoom!

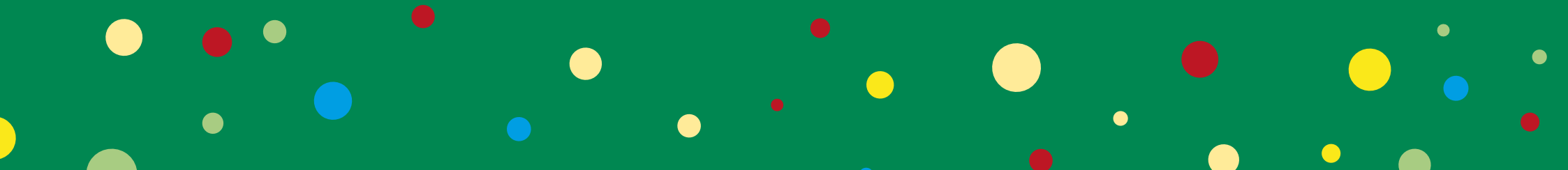
If you are using Zoom from your computer:

- 1) Log into your Zoom account.
- 2) Click your profile picture and choose the settings link.
- 3) Find the 'Virtual Background' tab (you'll need to make sure the Virtual Background button is 'on' from the Meeting tab).
- 4) In the Virtual Background tab, you can upload your own Christmas virtual background saved on your computer.

If you are using Zoom from your phone:

- 1) When you're logged in, click the 'More' tab and tap the 'Virtual Background' option.
- 2) Choose a background from the provided library or upload your own photos.

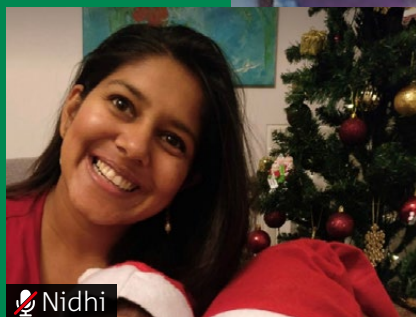
NOT
YOUR
**CHRISTMAS
PARTY**
THE VIRTUAL
GET TOGETHER







THANK YOU!



Nidhi



Simon

THANK YOU FOR HOSTING YOUR VIRTUAL GET-TOGETHER.

This Christmas, more people than ever will rely on the Trussell Trust food bank network. It shouldn't be this way. The money you raise will help support families facing destitution. Your generosity could help our network of food banks reach more people with the food and support they need to get through the winter – and escape the impossible decisions that hardship brings.

So after your party, don't forget to ask for those last few donations from your party guests, why not send round the photos from the night to remind them of the fun you had!

Join us now, more information can be found here:

www.trusselltrust.org

